



REGIONAL SPECIALISED METEOROLOGICAL CENTRE -TROPICAL CYCLONES, NEW DELHI TROPICAL WEATHER OUTLOOK

DEMS-RSMC TROPICAL CYCLONES NEW DELHI DATED 16.06.2025

TROPICAL WEATHER OUTLOOK FOR THE NORTH INDIAN OCEAN (THE BAY OF BENGAL AND THE ARABIAN SEA) VALID FOR THE NEXT 168 HOURS ISSUED AT 0600 UTC OF 16.06.2025 BASED ON 0300 UTC OF 16.06.2025.

BAY OF BENGAL:

Yesterday's upper air cyclonic circulation over Northwest Bay of Bengal & neighbourhood persists and now seen between 1.5 & 5.8 km above mean sea level tilting southwestwards with height at 0300 UTC of today's, 16th June, 2025.

Scattered to broken low and medium clouds with embedded intense to very intense convection lay over north & central Bay of Bengal and north Andaman Sea. Scattered low and medium clouds with embedded moderate to intense convection lay over south Bay of Bengal and south Andaman Sea.

*PROBABILITY OF CYCLOGENESIS (FORMATION OF DEPRESSION) DURING NEXT 168 HRS:

24 HOURS	24-48 HOURS	48-72 HOURS	72-96 HOURS	96-120 HOURS	120-144 HOURS	144-168 HOURS
NIL	NIL	NIL	NIL	NIL	NIL	NIL

*NOTE: EVERY 24HR FORECAST IS VALID UPTO 0300 UTC (0830 IST) OF NEXT DAY

ARABIAN SEA:

LAND:

A fresh upper air cyclonic circulation formed over central parts of Konkan and adjoining eastcentral Arabian sea at 1500 UTC of 15th June 2025 now lay over south Gujarat & neighbourhood and extends upto 7.6 km above mean sea level. Under its influence, a **Low Pressure area** is likely to form over the same region during next 24 hours and it is likely to become more marked and move north-northwestwards during subsequent 24 hours.

Scattered to broken low and medium clouds with embedded intense to very intense convection lay over eastcentral & northeast Arabian Sea off Maharashtra – Gujarat coasts, Gulf of Cambay and Gulf of Kutch. Scattered low and medium clouds with embedded moderate to intense convection lay over rest eastcentral & southeast Arabian Sea, Lakshadweep Islands area, Maldives & Comorin area and weak to moderate convection lay over westcentral & southwest Arabian Sea.

*PROBABILITY OF CYCLOGENESIS (FORMATION OF DEPRESSION) DURING NEXT 168 HRS:

24 HOURS	24-48 HOURS	48-72 HOURS	72-96 HOURS	96-120 HOURS	120-144 HOURS	144-168 HOURS
NIL	NIL	NIL	NIL	NIL	NIL	NIL

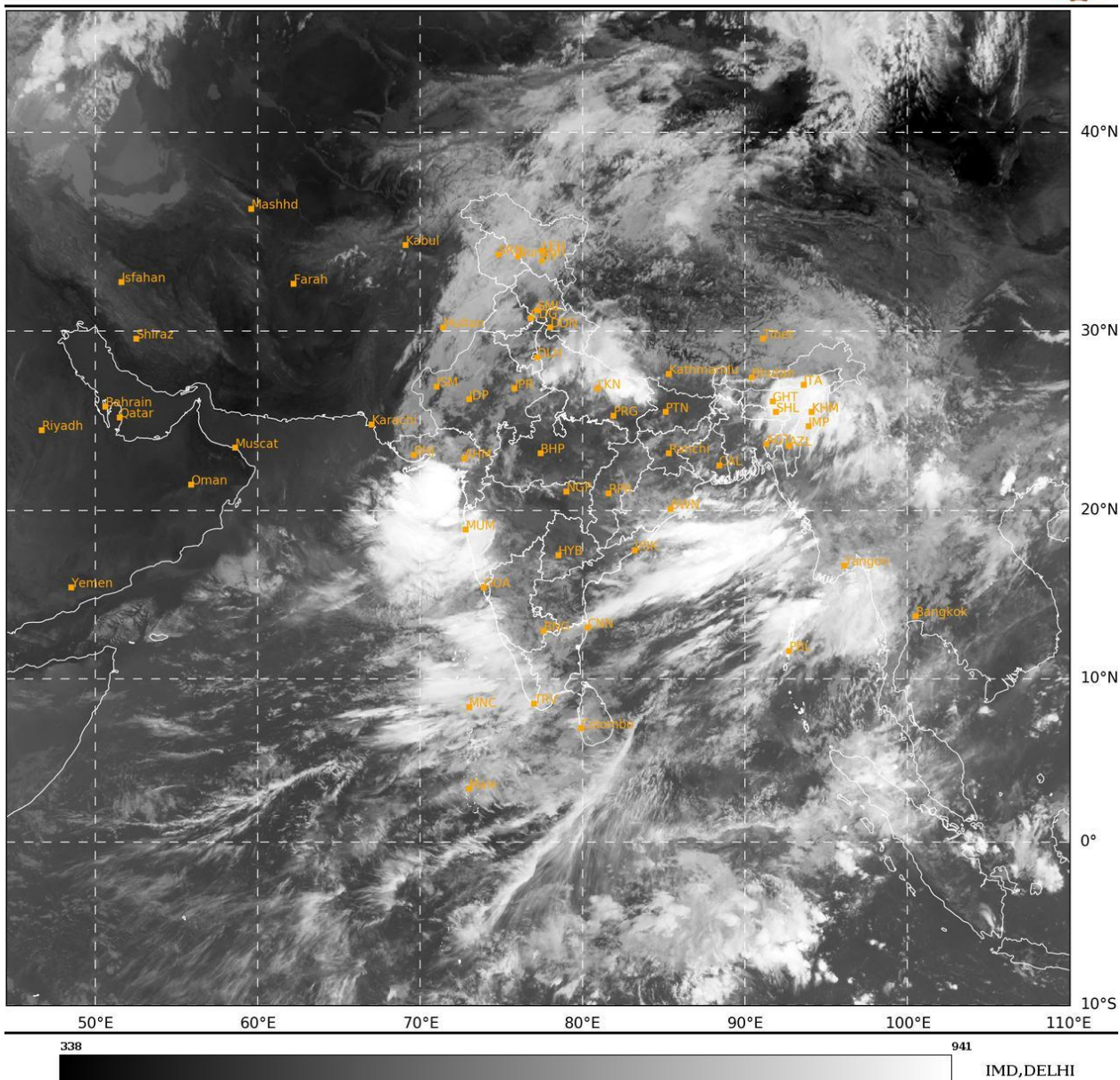
*NOTE: EVERY 24HR FORECAST IS VALID UPTO 0300 UTC (0830 IST) OF NEXT DAY

REMARKS: NIL

Cloud distribution: (a) Isolated: <25%, Scattered:25-50%, Broken: 51-75%, Solid:>75%, Convection Intensity: (a) Weak: Cloud Top Temperature(CTT)>-25°C,(b)Moderate:CTT:-25°Cto-40°C,(c)Intense:CTT: -41°Cto -70°Cand(d)Very Intense::Less than -70°C
PROBABILITYOFCYCLOGENESIS(FORMATIONOFDEPRESSION):NIL:0%,LOW:1-33%,MODERATE:34-66%ANDHIGH:67-100%
ThisisaguidanceBulletinforWMO/ESCAPPanelMembercountries.VisitrespectiveNationalwebsitesforCountryspecificBulletins

SAT : INSAT-3DR IMG
 IMG_TIR1 10.8 um
 LIC Mercator

16-06-2025/(0315 to 0342) GMT
 16-06-2025/(0845 to 0912) IST



Cloud distribution: (a) Isolated: <25%, Scattered:25-50%, Broken: 51-75%, Solid:>75%, Convection Intensity: (a) Weak: Cloud Top Temperature(CTT)>-25°C,(b)Moderate:CTT:-25°Cto-40°C,(c)Intense:CTT: -41°Cto -70°Cand(d)Very Intense::Less than -70°C
 PROBABILITYOFCYCLOGENESIS(FORMATIONOFDEPRESSION):NIL:0%,LOW:1-33%,MODERATE:34-66%ANDHIGH:67-100%
 ThisisaguidanceBulletinforWMO/ESCAPPanelMembercountries.VisitrespectiveNationalwebsitesforCountryspecificBulletins